

# Artificial Intelligence/ Machine Learning Consortium to Advance Health Equity and Researcher Diversity

**Gloria Washington, Ph.D.**  
Associate Professor, Computer Science  
Co-PI: Data Science Training Core  
Email: [gloria.washington@howard.edu](mailto:gloria.washington@howard.edu)



**HOWARD**  
UNIVERSITY



MEDICAL CENTER



**OCHIN**



# Team



**Legand L. Burge, III, PhD**  
Professor of Computer Science

**\*DSTC LEAD MPI**



**Chunmei Liu, PhD**  
Professor of Computer Science



**Gloria Washington, PhD**  
Asst. Professor of Computer Science

**\*DSTC Co-PI**



**Danda Rawat, PhD**  
Professor of Computer Science,  
Dir of COE-AI/ML

**Computer Science & Engineering**



**Gail Nunlee-Bland, MD**  
Assoc. Professor of Medicine, Dir  
Diabetes Treatment Center, HUH



**Mark S. Johnson, MD**  
Professor of Medicine,  
Director of NHIT Data  
Fusion Center



**William Southerland, PhD**  
Professor of Biochemistry &  
Molecular Biology, Dir of  
RCMI



**Thomas Obisesan, MD, MPH**  
Professor of Medicine, Associate  
Vice President for Regulatory  
Research Compliance



**Andrea Jackson, DDS**  
Dean, School of  
Dentistry



**Xiang Wang, PhD**  
Assoc. Professor of  
Pharmaceutical  
Sciences



**Priscilla Okunji, PhD, MSN**  
Asst. Professor of Nursing &  
Allied Health



**Richard S. Schottenfeld, MD**  
Professor of Medicine

**Medicine & Dentistry +  
Nursing, Allied Health & Pharmacy**



**Yeona Kang, PhD**  
Asst. Professor of  
Mathematics



**Bourama Toni, PhD**  
Professor of  
Mathematics



**Karl Thompson, PhD**  
Assoc. Professor of  
Microbiology

**Arts & Sciences**



MedStar Health  
Research Institute

• GU • HU • MHRI • ORNL • DC VAMC •



**GHUCCTS**

Georgetown-Howard Universities  
Center for Clinical and Translational Science



**Nawar Shara, PhD (MPI)**

~~Dir of Center of Biostatistics, Informatics and Data Science (CBIDS); Associate Professor of Medicine, Dir of BERD-GHUCCTS; Co-Dir of BI-GHUCCTS~~



**Alexander V. Libin, PhD**

Founding Editor, Coping with Pandemic & Infodemic Stress, Multimedia Education, & Psychosocial Research Program; Scientific Dir, Biostatistics & Research Design Core, GHUCCTS

**EHR & Diverse Data Pipelines,  
Clinical Informatics Research  
& Infrastructure**

**DSTC Team Contd.**



SCHOOL OF  
**PUBLIC HEALTH**  
CENTER FOR HEALTH EQUITY



ROBERT H. SMITH  
SCHOOL OF BUSINESS  
**CHIDS** CENTER FOR HEALTH INFORMATION  
AND DECISION SYSTEMS



**Stephen B. Thomas, PhD**

Professor of Public Health, Dir of Univ. Maryland Center for Health Equity



**Ritu Agarwal, PhD (MPI)**

~~Distinguished University Professor, Dean's Chair of IS, Co-Dir of CHIDS~~



**Kenyon Crowley, PhD, MBA**

Managing Director of CHIDS, Assoc. Research Scholar, DOIT



**Michelle Dugas, PhD**

Senior Research Scientist, CHIDS, Assoc. Research Scholar, DOIT

**Health Equity, AI, Decision Sciences,  
Implementation Science &  
Management**



Georgetown University  
Innovation Center for  
Biomedical Informatics



**Caleb C. McKinney, PhD, MPS**

Assistant Dean, Graduate and Postdoctoral Training & Development Biomedical Graduate Education, Assistant Professor of Rehabilitation Medicine



**Peter McGarvey, PhD (MPI)**

~~Professor and Dir of ICBI~~



**Adil Alaoui, MS**

Dir of Health IT and Operation, ICBI

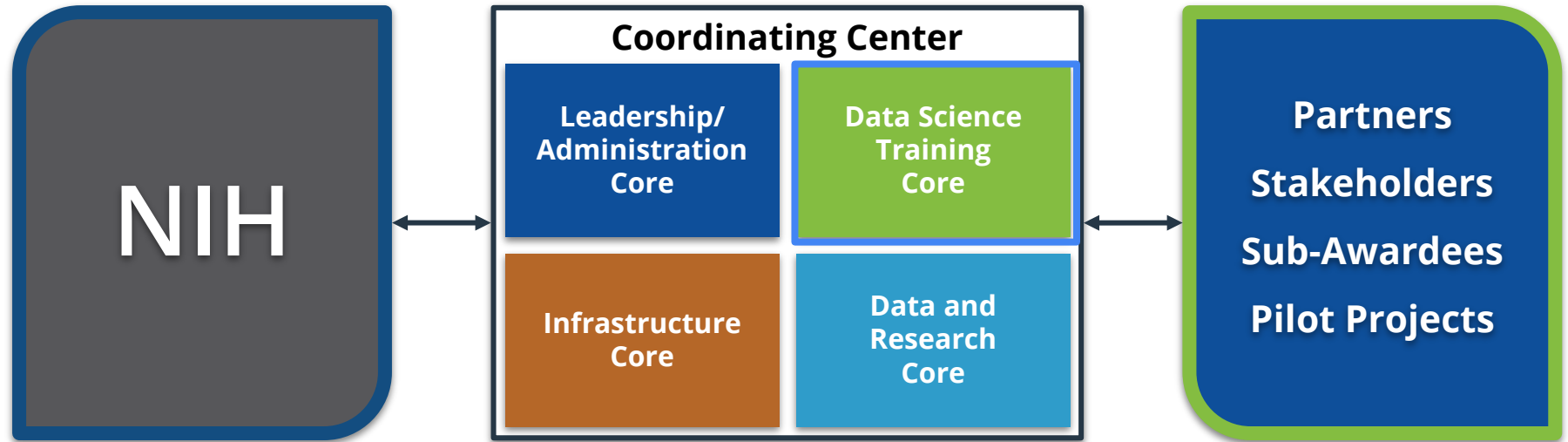


**Yuriy Gusev, PhD**

Dir Health Informatics and Data Science MS Program

**Biomedical Informatics,  
Precision Med, Data Sci &  
Translation**

# AIM-AHEAD Consortium



Underrepresented communities have untapped potential to contribute new expertise, data, recruitment strategies, and cutting-edge science to the AI/ML field. This program seeks to increase the participation and engagement of the researchers and communities that are currently underrepresented in AI/ML modeling and applications. Initial focus is to identify **priority research aims in health equity and AI/ML**, as well as **develop training pathways and infrastructure** needed to support these.

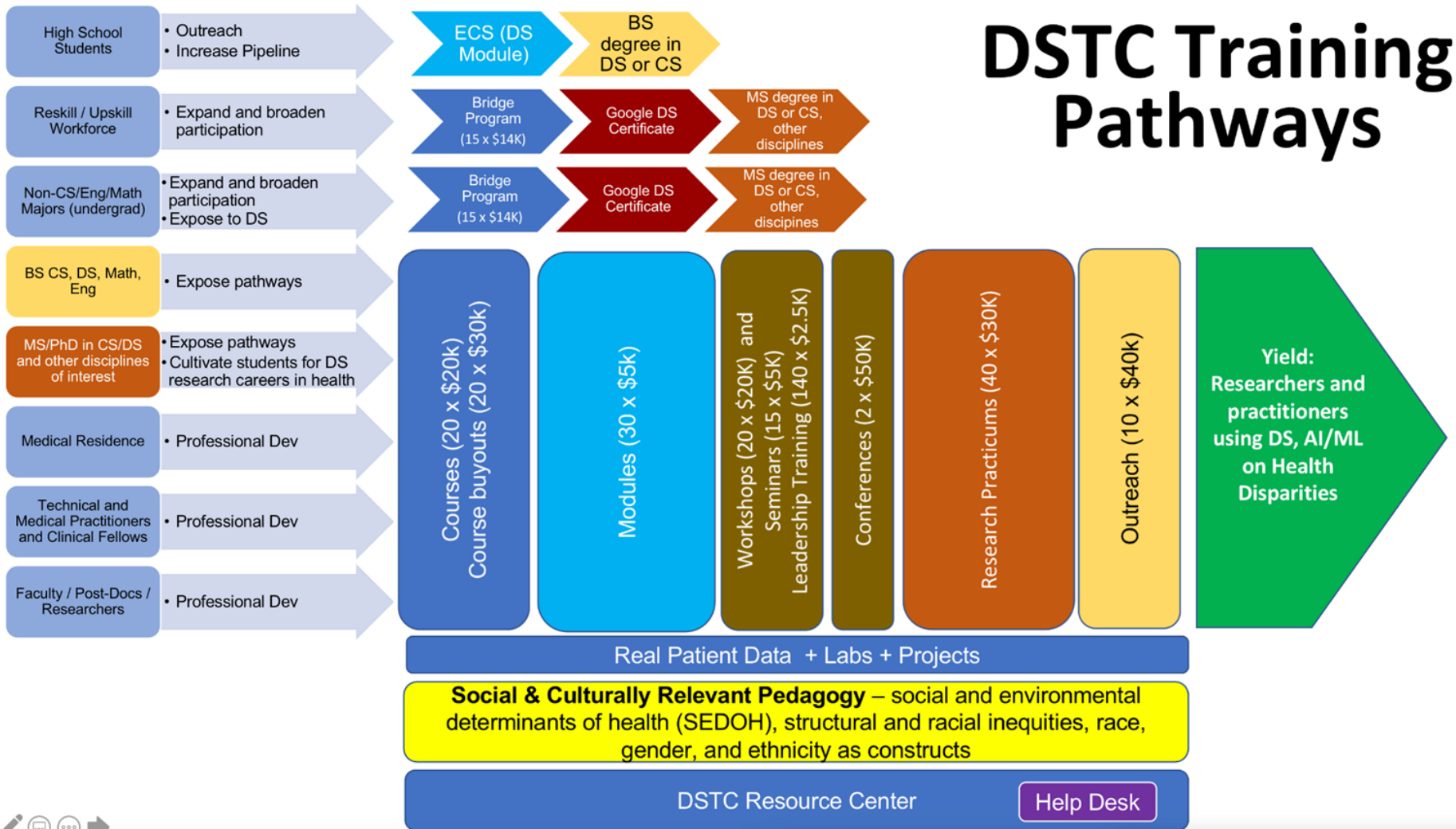
# Purpose

The Data Science Training Core (DSTC) will **identify training needs and gaps** as well as **identify or develop training and workforce development resources** to address AI/ML and health disparities research.

Stakeholder engagement will involve **training around AI / ML and health disparities research** as well as **related competencies** in: cloud computing, distributed computing, data preparation, data science, biostatistics, modelling, epidemiology, clinical / biomedical informatics, data science policy, ethics, and health disparities and community engaged research methods.

It is expected that all training engagements involve **application-based learning** and utilize **large scale data**.

# DSTC Training Pathways



# Interaction with External Partners

DATA SCIENCE TRAINING CORE (DSTC)							
Partners	Course/ Modules	Conferences , Workshops, Seminars	Practicum Experiences	BRIDGE Fellowship	Help Desk (T-CSD)	Course Buyout - Teaching Sabbaticals	Outreach
<b>Industry</b>	Licenses, credits, curriculum and content	Licenses, credits, sponsor, speakers	Identify Reviewers	Identify working professionals wanting to retool	Provide Technical Support in CoP	Guest Lectures	Volunteer as mentors, guest speakers
<b>Data Science Organizations</b>	Provide Computational Resources, Curriculum Content	Apply to Grants	Disseminate FOAs, Identify Reviewers	Identify non-STEM undergrads wanting PhDs and M.S. in Data Science and CS	Provide Feedback in CoP to to Data, Algorithms, Prog Language, and Visualization Related Problems and Questions	Guest Lecturers	Volunteer as mentors, guest speakers
<b>Medical/Health Organizations/ Labs</b>	Data / Compute Provider	Apply to Grants	Volunteer as mentors	Identify physicians and health professionals wanting to retool	Provide Feedback in CoP on Use Cases / Course Projects and Labs	Guest Lecturers	Volunteer as mentors, guest speakers


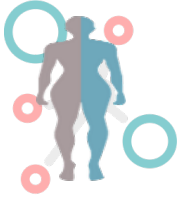





# Upcoming AIM-AHEAD Opportunities

- Join the Community <http://www.aim-ahead.net>
- Looking for suggestions on potential courses that cover topics on AI tools and methods for Research, Clinical Practice, Teaching/administrators of those courses [https://bit.ly/HU\\_CoM\\_AI\\_LEARN](https://bit.ly/HU_CoM_AI_LEARN)
- Research, Training, and Infrastructure Grants -
  - [Due June 20th](#)
  - <https://www.aim-ahead.net/call-for-proposals-year-2/>


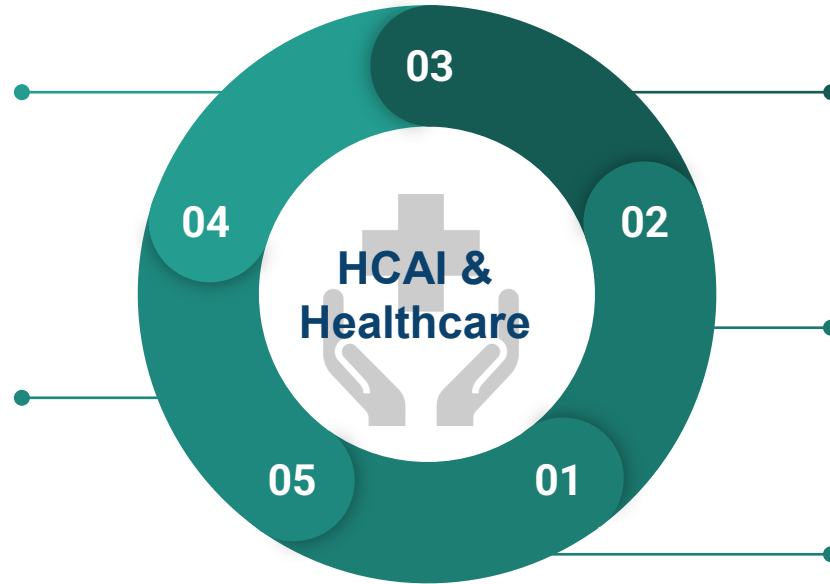





**Specialized Content**  
specialized content based on user preferences and performance metrics related to facial expressions, stress, anxiety, and engagement




**Optimized Learning Networks**  
Group learners based off of personalities and behavior for increased performance, networking, and effective communication



**Positive Friction**  
Nudging students and optimized learning networks toward positive communications and improved learning outcomes

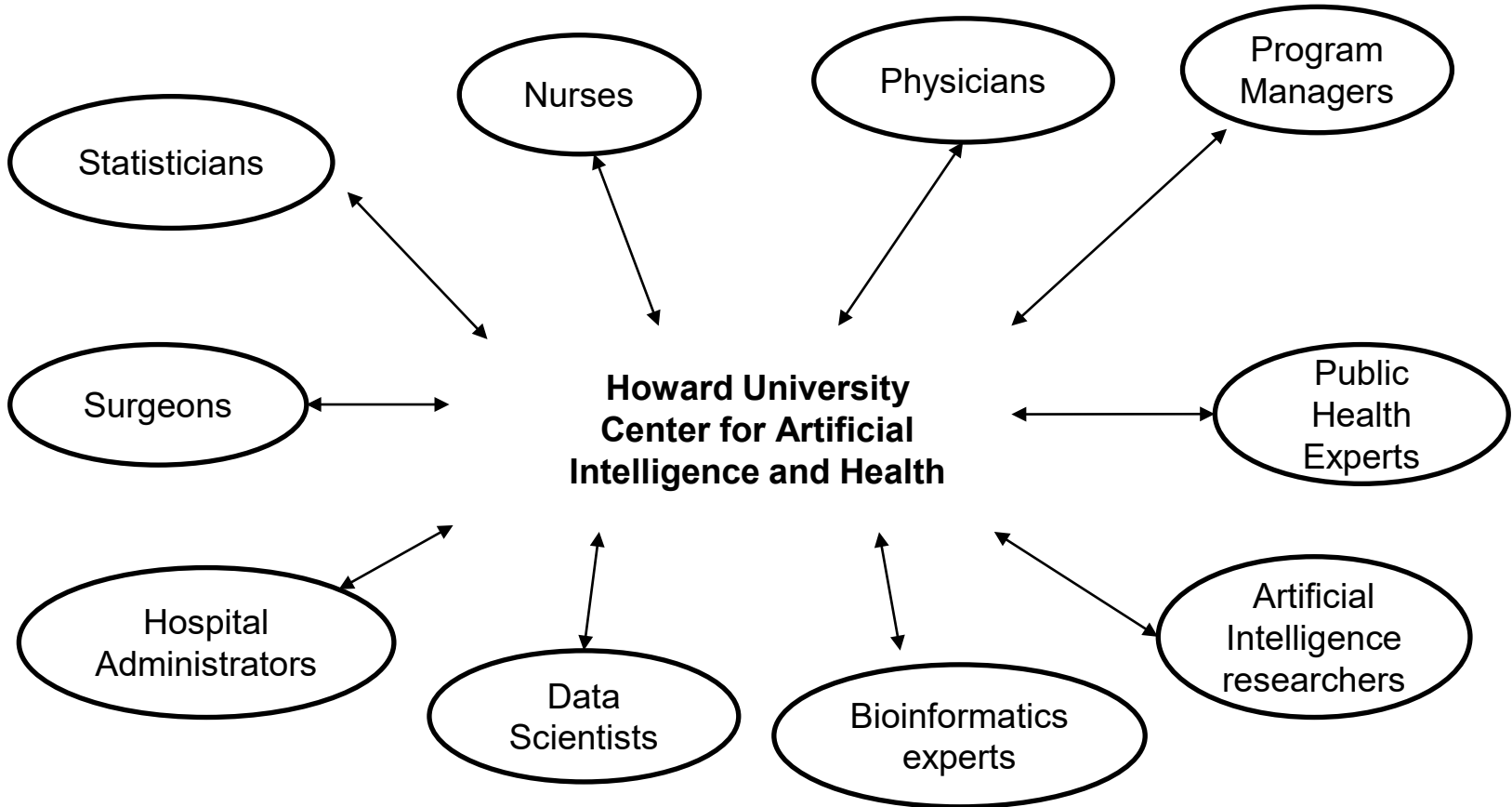


**Empathetic Communication**  
Through generative AI approaches (ChatGPT) and using like mixed reality we can teach correct diagnoses with empathetic healthcare



**Human-in-the-Loop Learning**  
Scenario-based learning for mastery of important skills outside of memorization, but real world applications

# Howard University Center for Health Artificial Intelligence





# Howard University Center for Artificial Intelligence and Health

## Research

### Example

- Using artificial intelligence to predict patients risk for health conditions e.g. opioid use disorder

## Operations

### Example

- Identify patients that could benefit from a particular treatment
- Using artificial intelligence to predict patients risk for health conditions e.g. Sepsis or opioid use disorder

# POC List

Name	Contact	AI Interests
Legand (Lee) L. Burge III	<a href="mailto:lburge@howard.edu">lburge@howard.edu</a> HUIRB 421a	Health Equity and Health Disparities, SDoH, Telehealth, Smart Health, Innovation and Entrepreneurship
Gloria Washington	<a href="mailto:gloria.washington@howard.edu">gloria.washington@howard.edu</a>	Human Centered AI, HCI, wearables
Anietie Andy	<a href="mailto:anietie.andy@howard.edu">anietie.andy@howard.edu</a> LKD Downing Room 2036	Natural Language Processing, Data Science, Applied AI/ML
Saurav K. Aryal	<a href="mailto:saurav.aryal@howard.edu">saurav.aryal@howard.edu</a>	Multimodal & Applied AI/ML